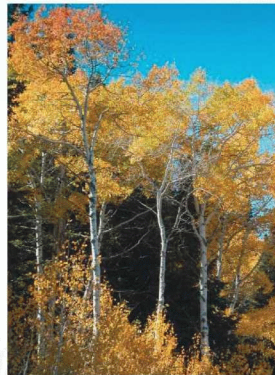
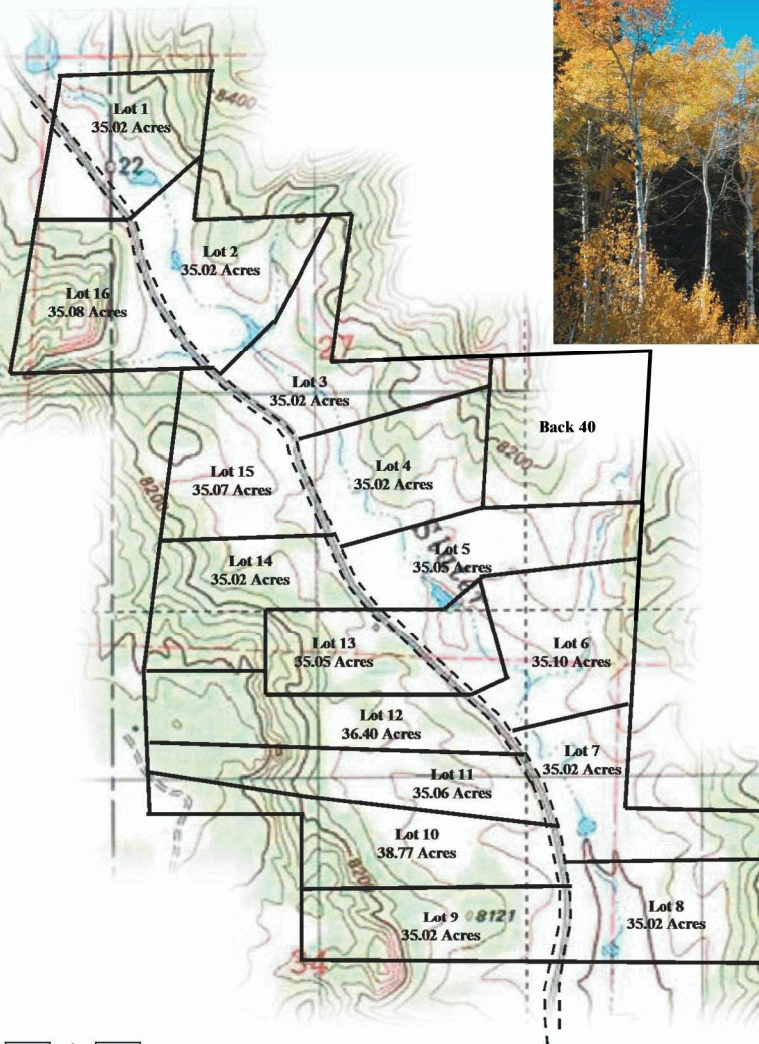


RANCHES AT SLATER CREEK



The Ranches at Slater Creek are a unique collection of 35 acre parcels, located about one hour west of Colorado Springs and 20 minutes from Woodland Park. Situated beautifully in the Slater Creek Valley, these parcels are framed by dramatic red rock cliffs and slope gently through quaking Aspens and Ponderosa Pines to lush grass meadows along Slater Creek. The valley is home to a variety of wildlife species including elk, deer, ducks and Canadian geese.



EASY ACCESS

The Ranches at Slater Creek feature easy access from County Road 111 and are only 2.2 miles from paved County Road 11. Located only 30 minutes from Gold Medal fishing.

RED ROCK CLIFFS

The Ranches deliver an open and dramatic feel while insuring privacy and seclusion with a backdrop of red cliffs and forested sites.

SLATER CREEK

Slater Creek runs through Parcels 1-8 with many of those parcels featuring ponds for horses and wildlife.

Prices range from \$129,500. Please call for more information.





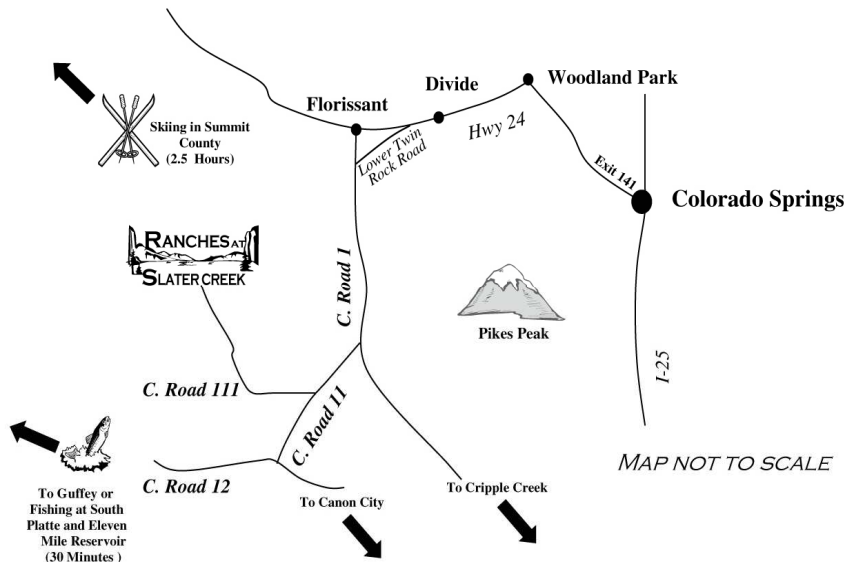
32186 Castle Court, #240
 Evergreen, CO 80439
 1-866-400-9100

THE RANCHES AT SLATER CREEK

PARCEL PRICES:

		<u>PP</u>	<u>MLS</u>	<u>Metro</u>	<u>list #</u>
Parcel 1&16	SOLD				
*Parcels 1&16 are to be sold together					
Parcel 2	SOLD				
Parcel 3	SOLD				
Parcel 4	SOLD				
Parcel 5	SOLD				
Back 40	SOLD				
Parcel 6	SOLD				
Parcel 7	SOLD				
Parcel 8	SOLD				
Parcel 9	\$190,000	469053			992576
Parcel 10	SOLD				
Parcel 11	SOLD				
Parcel 12	SOLD				
Parcel 13	SOLD				
Parcel 14	SOLD				
Parcel 15	SOLD				

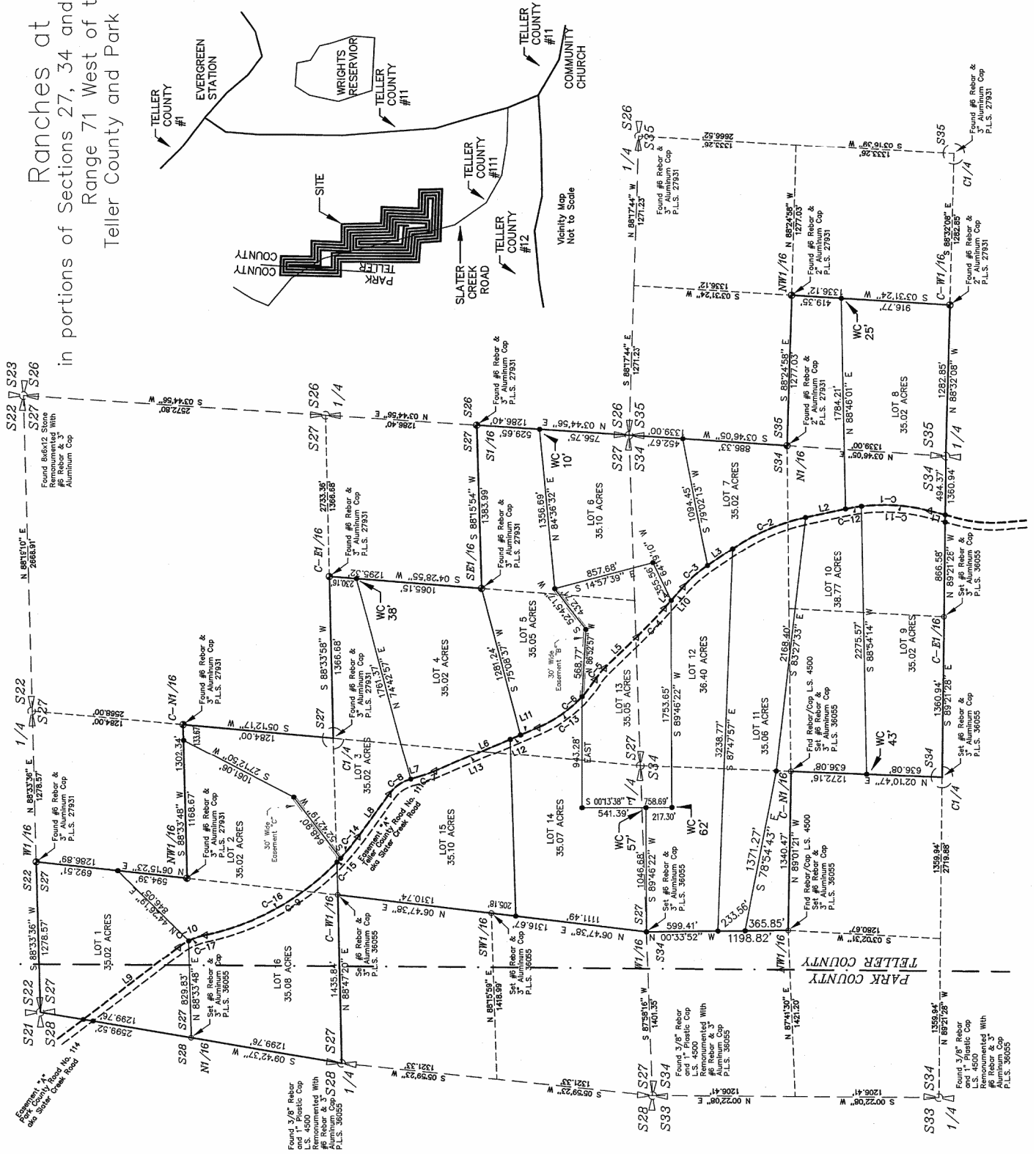
List updated 9/21/2006. Owner reserves the right to change prices without notice or obligation.



Driving Directions:
 West from Woodland Park on Hwy 24. South at Florissant on County Road 1. Continue south on County Road 1 for 9.1 miles. (Or 5.9 miles from Lower Twin Rock Road and County Road 1 intersection.) Take a right, (southwest) on County Road 11. Continue for 3.73 miles and take a right (west) on County Road 111. Continue for 2.2 miles to start of property.

Ranches at Slater Creek

in portions of Sections 27, 34 and 35, Township 14 South,
Range 71 West of the 6th P.M.,
Teller County and Park County, Colorado



Vicinity Map
Not to Scale

TELLER COUNTY
PARK COUNTY